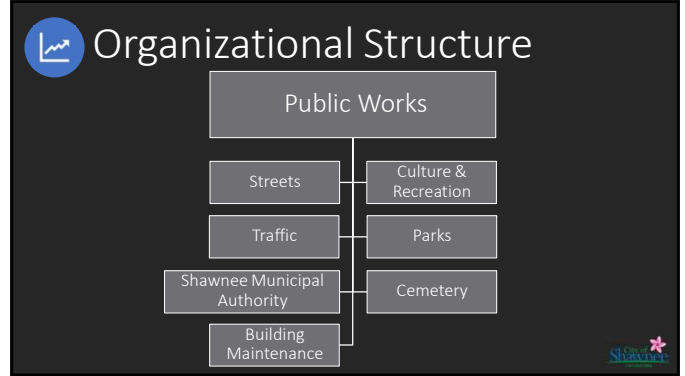




## Public Works - Responding to Growth

Brad Schmidt, Public Works Director



## Personnel

Public Works - 158 positions *(88 full-time & 70 part-time/seasonal)*

- Administration: 2
- Streets: 14 / 12 filled
- Traffic: 3
- Parks: 13.5
- Building Maintenance: 3
- Treatment Operations: 22
- Water Distribution & Sewer Collection: 24 / 19 filled
- Cemetery: 4
- Culture & Recreation: 3 full time & 3 part time  
66 seasonal & more volunteers

## What is Public Works?

“The combination of physical assets, management practices, polices and personnel necessary for government to provide and sustain structures and services essential to the welfare and acceptable quality of life for its citizens.” – APWA

## Public Works as First Responder

**PUBLIC WORKS**

**FIRST RESPONDER**

In November 2017, the American Public Works Association (APWA) Board of Directors approved the adoption of a national “Public Works First Responder” Symbol for use throughout North America to identify public works personnel and acknowledge their federally-mandated role as first responders.

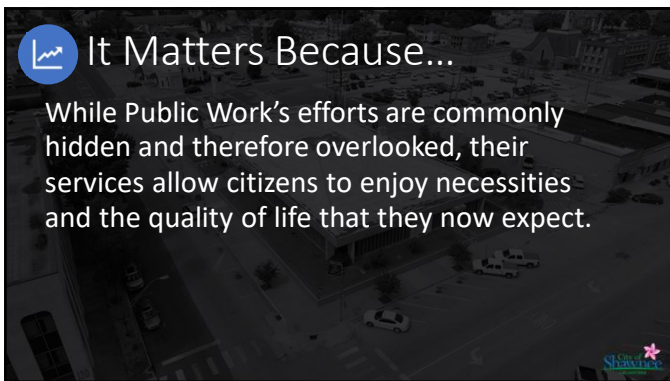
## Public Works Responsibilities

General Operations, Maintenance, and Repair

- Public streets
- Storm sewers
- Water mains
- Sanitary sewers
- Water & Sewer Treatment Plants
- Public buildings
- And more...


### It Matters Because...

While Public Work's efforts are commonly hidden and therefore overlooked, their services allow citizens to enjoy necessities and the quality of life that they now expect.



### Physical Assets

- Streets: 551 lane miles
- Traffic: 42 traffic signals
- Sidewalks: 64 miles
- Trails: 6.7 miles
- 36 Parks
- 54 Facility Structures
- 12,370 Water accounts
- 1 Drinking Water & 2 Wastewater Treatment Plants
- Water Mains: 234 miles
- Sanitary Sewer: 186 miles
- 3,617 Sanitary Manholes
- 14 Lift Stations
- Shawnee Twin Lakes
- Wes Watkins Lake



### Asset Management Activities


- Street overlay & panel replacement
- Bridge & Scour repair
- Pothole repair
- Curb repair
- Snow removal
- Seasonal mowing & beautification
- Water & sewer line maintenance & repair
- Pump replacement
- Lagoon cleaning
- Digester cleaning
- Culvert Replacement
- Lake Dam repair
- Etc.



### Public Works Stats

In 2023, the Public Works Department –

- Prepared 1,315,679,516 gallons of drinking water
- Treated 31,276,000 gallons of wastewater
- Patched 646 potholes & repaired 10 lane-miles of roadway
- Repaired 62 water line breaks
- Mowed 600+ acres of grass *all season long*
- Maintained all City buildings and parks... and more!




### Long-term Capital Planning

*For example... Roadway Pavement Condition*

- Pavement Condition Index (PCI) rating based on type and severity of surface distress, incl. cracking, rut depth, amount of patching, potholes & ride quality
- 260 (47%) of 551 lane miles have a **PCI of 50** out of 100
- Construction cost varies per lane mile from \$235k for a mill/overlay to \$833k on a new alignment

*For example... Water and Wastewater System Condition*

- 234 miles of water & 186 miles of wastewater lines
- 150 miles are 50+ years old
- Cost depends on pipe size / material and varies per mile from \$400k to \$1.2m



### New – Pressure Pave Contract

- Step 1 – Pressurized injection into roadway cracks
- Step 2 – Application of water-resistant membrane
- Step 3 – Preparation of driving surface with second sealant
- Drivable after 30 minutes



## New – Asphalt Machine

- LeeBoy 1000G
- Requires a 3-5-person crew
- Ability to pave up to 13' wide
- Part of comprehensive maintenance plan
- Savings up to 50% over contracted cost



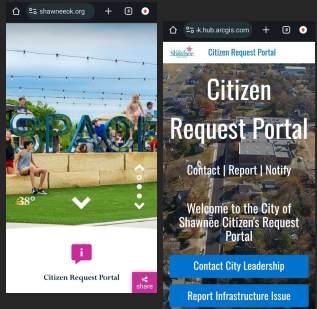
## New – Volumetric Truck

- Pre-programmable for consistent applications
- Significant cost savings
- Time efficiency
- Low/no waste - Eco friendly



## ICE...

- To ensure the best services, report issues right away
- **Online Citizen Portal**
  - Starting from Shawneeok.org
- **Call During Business Hours**
  - 405-273-1960 PW Main Office
  - 405-878-1529 Cemetery Office
- **Call After Hours**
  - 405-273-0890 Water Plant
  - 405-273-2121 Non-Emergency Dispatch



Thank you! Questions?  
Public Works

